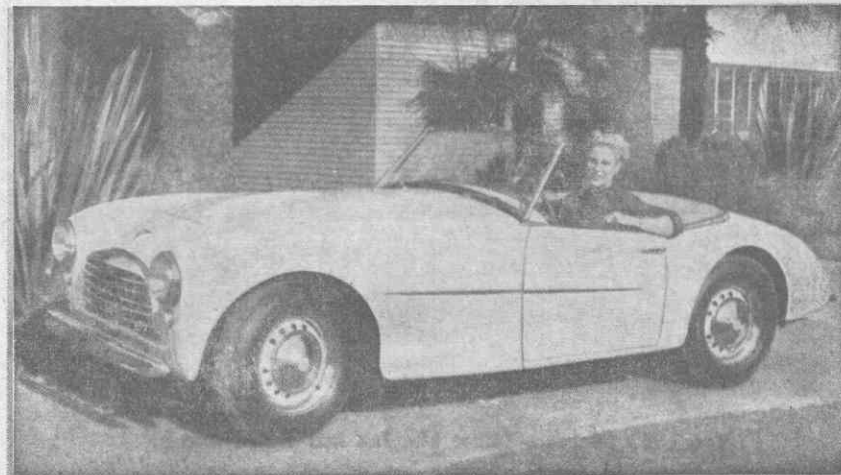
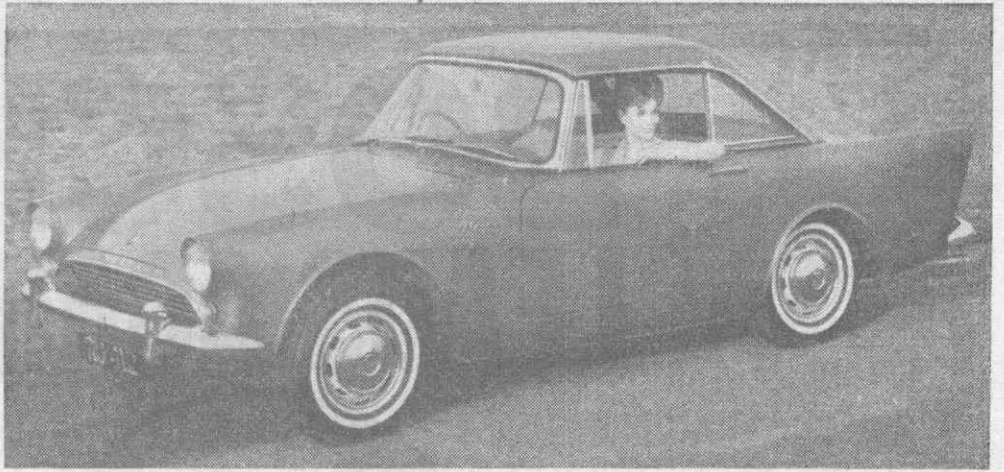


RAPIER

1962—Alpine continued unchanged at this year's London it became available as a sports tourer (87.7 bhp) and a Grand Turismo model (80-25 bhp). The new models share a number of important features, servo-assisted brakes, a more commodious boot, and a seat and foot control which provides 64 different adjustments. The Rapier models were continued unchanged with the big differences expected at this year's London show.

Introduced during 1963 was the Sunbeam Alpine Mk.III.



SWALLOW

Production by the Swallow Coachbuilding Company of a two seater sports-car based on the TR2 began in March 1954 and ended in March 1955. Known as the Doretti, it had an attractive, flush-sided body with sleek lines, the cockpit was well trimmed and fitted out to touring car standards. Overdrive was an option and altogether the Doretti proved to be a pleasant 2-seater with safe, stable roadholding and viceless handling. The motor was the well known 1991 cc unit which developed 90 bhp.

Produced between March 1954 and March 1955 was the attractive Swallow Doretti.



TALBOT

The model illustrated at left is the Talbot-Lago, a 2.5 litre car with a tubular frame. The four cylinder engine used inclined valves in hemispherical combustion chambers, operated through rockers and short push rods from two camshafts placed high in the crankcase. Two twin-choke Weber carburetors were used, the cylinder block was in iron, the head in aluminium and the crankshaft ran to five bearings.

The Talbot-Lago 2½ litre.

TATRA

Built in Czechoslovakia by the Tatra organisation the Tatroplan was an unusual car, to say the least. The model at right featured a 1970 cc four cylinder engine mounted in the rear. The latest car while maintaining the same basic styling now has four headlamps and larger wrap around windows. It is powered by a rear air-cooled 2472 cc V8 engine of 125 bhp, needless to say oversteer is predominant.

The 2 litre Tatroplan introduced in 1951.

