

FROM THE BRITISH FACTORIES

continued

STANDARD—continued

Tyre size, 5.60—13in. Battery, 12volt, 38 a/h.
Saloon £409
Estate car £460

Vanguard: 4-cyl, 85×92 mm (3.35×3.62in), 2,088 c.c. (127.6 cu in); O.H.V.; compression ratio, 7 to 1; 68 b.h.p. at 4,200 r.p.m.; 3 speeds, or 5 speeds with overdrive, synchromesh (overall ratios, 4.625, 7.71 and 16.35 to 1; with overdrive,

(3.6), 4.625, (6.0), 7.7 and 16.35 to 1); steering column control.

Suspension, independent front, coil springs; $\frac{1}{2}$ -elliptic rear. Brakes, Lockheed hydraulic; two-leading shoe front, leading and trailing rear.

Wheelbase, 7ft 10in (238 cm); widest track, 4ft 6in (137 cm). Overall length, saloon, 14ft (426 cm); estate car, 13ft 7in (416 cm); width, 5ft 9in (175 cm); height, saloon, 5ft 5in (166 cm); estate car, 5ft 6in (168 cm); ground clearance, 8in (20 cm). Turning circle, 35ft (1,067 cm). Weight (approx.), 2,688 lb (1,222 kg).

Tank capacity, 12½ Imperial gallons (56.82 litres). Tyre size, 6.00—16in. Battery, 12volt, 51 a/h.

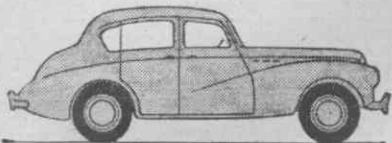
Saloon £555
Estate car £633

Vanguard Diesel: Specification as for Vanguard, except for: 4-cyl, 80.96×101.6 mm (3.18×4in), 2,092 c.c. (127.68 cu in); compression ratio, 17 to 1; 40 b.h.p. at 3,000 r.p.m.

Saloon £735
Estate car £813

SUNBEAM

Sunbeam, Ltd.
Ryton-on-Dunsmore, Coventry



Mark III: 4-cyl, 81 × 110 mm (3.19 × 4.33), 2,267 c.c. (138.2 cu in); O.H.V.; compression ratio, 7.5 to 1; 80 b.h.p. at 4,400 r.p.m.; 4 speeds, synchromesh (overall ratios, 3.9, 5.811, 9.633 and 12.43 to 1); overdrive (3.28), final drive ratio, 4.22 to 1, optional extra; steering column control.

Suspension, independent front, wishbones and coil springs; $\frac{1}{2}$ -elliptic rear. Brakes, Lockheed hydraulic; two-leading shoe front, leading and trailing rear.

Wheelbase, 8ft 1½in (248 cm); widest track, 4ft 2½in (128 cm). Overall length, 14ft (427 cm); width, 5ft 2½in (159 cm); height, saloon, 5ft 0½in

(154 cm); convertible, 4ft 11in (150 cm); ground clearance, 6.63in (17 cm). Turning circle, 36½ft (1,112 cm). Weight (approx.), 2,926 lb (1,328 kg).

Tank capacity, 10 Imperial gallons (45 litres). Tyre size, 5.50—16in. Battery, 12-volt, 51 a/h.
Sports saloon £795
Sports convertible £845
Overdrive £45

Alpine: Specification as for Mark III, except for:—Overall length, 14ft 0½in (428 cm); height, 4ft 9½in (147 cm). Weight (approx.), 2,856 lb (1,298 kg).

Sports 2-seater (with overdrive) £855

SWALLOW DORETTI

Swallow Coachbuilding Co. (1935), Ltd.,
The Airport, Walsall, Staffordshire



Mark I: 4-cyl, 83 × 92 mm (3.27 × 3.62in), 1,991 c.c. (122 cu in); O.H.V.; compression ratio, 8.5 to 1; 90 b.h.p. at 4,800 r.p.m.; 4 speeds, synchromesh (overall ratios, 3.7, 4.9, 7.4 and 12.5 to 1); overdrive (3.03) optional extra; central control.

Suspension, independent front, wishbones and coil springs; $\frac{1}{2}$ -elliptic rear. Brakes, Lockheed hydraulic; two-leading shoe front, leading and trailing rear.

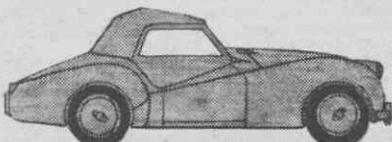
Wheelbase, 7ft 11in (241 cm); widest track, 4ft (122 cm). Overall length, 13ft (396 cm); width 5ft 1in (155 cm); height 4ft 0½in (123 cm); ground clearance, 6in (15 cm). Turning circle, 36½ft (1,112 cm). Weight (approx.), 2,030 lb (923 kg).

Tank capacity, 12½ Imperial gallons (56.82 litres). Tyre size, 5.50—15in. Battery, 12-volt, 51 a/h.

Two-seater £777

TRIUMPH

The Triumph Motor Co. (1945) Ltd.,
a subsidiary of The Standard Motor
Co., Ltd., Coventry



TR2 Sports: 4-cyl, 83 × 92 mm (3.27 × 3.62in), 1,991 c.c. (122 cu in); O.H.V.; compression ratio, 8.5 to 1; 90 b.h.p. at 4,800 r.p.m.; 4 speeds, synchromesh (overall ratios, 3.7, 4.9, 7.4 and 12.5 to 1); overdrive optional; central control.

Suspension, independent front, coil springs; $\frac{1}{2}$ -elliptic rear. Brakes, Lockheed hydraulic; two-leading shoe front, leading and trailing rear.

Wheelbase, 7ft 4in (224 cm); widest track,

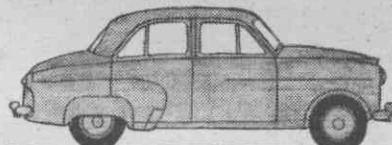
3ft 9½in (116 cm). Overall length, 12ft 7in (384 cm); width, 4ft 7½in (140 cm); height, 4ft 2in (127 cm); ground clearance, 6in (15 cm). Turning circle, 32ft (975 cm). Weight (approx.), 1,960 lb (891 kg).

Tank capacity, 12½ Imperial gallons (56.82 litres). Tyre size, 5.50—15in. Battery, 12-volt, 51 a/h.

Two-seater £625
Hard top £670

VAUXHALL

Vauxhall Motors, Ltd.,
Luton, Bedfordshire



Wyvern: 4-cyl, 79.37 × 76.2 mm (3.125 × 3in), 1,507 c.c. (92 cu in); O.H.V.; compression

ratio, 6.5 or 7.3 to 1; 45.5 b.h.p. or 47.7 b.h.p. at 4,000 r.p.m.; 3 speeds, synchromesh (overall ratios, 4.625, 7.576 and 15.882 to 1); steering column control.

Suspension, independent front, coil springs; $\frac{1}{2}$ -elliptic rear. Brakes, Vauxhall-Lockheed hydraulic; leading and trailing front and rear.

Wheelbase, 8ft 7in (262 cm); widest track, 4ft 6in (138 cm). Overall length, 14ft 2½in (434 cm); width, 5ft 6½in (169 cm); height, 5ft 3½in (161 cm); ground clearance, 6½in (17 cm). Turning circle, 38ft (1,158 cm). Weight (approx.), 2,235 lb (1,015 kg).

Tank capacity, 11 Imperial gallons (50 litres). Tyre size, 5.60—15in. Battery, 12-volt, 44 a/h.
Saloon £495

Velox and Cresta: 6-cyl, 79.37 × 76.2 mm (3.125 × 3in), 2,262 c.c. (138 cu in); O.H.V.;

compression ratio, 6.5 or 7.3 to 1; 65.5 b.h.p. or 67.5 b.h.p. at 4,000 r.p.m.; 3 speeds, synchromesh (overall ratios, 4.125, 6.725 and 12.798 to 1); steering column control.

Suspension, independent front, coil springs, $\frac{1}{2}$ -elliptic rear. Brakes, Vauxhall-Lockheed hydraulic; leading and trailing front and rear.

Wheelbase, 8ft 7in (262 cm); widest track, 4ft 6in (138 cm). Overall length, 14ft 4½in (438 cm); width, 5ft 6½in (169 cm); height, 5ft 3½in (161 cm); ground clearance, 7in (18 cm). Turning circle, 38ft (1,158 cm). Weight (approx.), Velox 2,370 lb (1,077 kg); Cresta, 2,395 lb (1,088 kg).

Tank capacity, 11 Imperial gallons (50 litres). Tyre size, 5.90—15in. Battery, 12-volt, 53 a/h.

Velox saloon £535
Cresta saloon £595

WOLSELEY

Wolseley Motors, Ltd.,
Cowley, Oxford



Four-Forty-Four: 4-cyl, 66.5 × 90 mm (2.62 × 3.54in), 1,250 c.c. (76.6 cu in); O.H.V.; compression

ratio, 7.3 to 1; 46 b.h.p. at 4,800 r.p.m.; 4 speeds, synchromesh (overall ratios, 5.125, 7.718, 11.547 and 19.511 to 1); steering column control.

Suspension, independent front, coil springs; $\frac{1}{2}$ -elliptic leaf rear. Brakes, Lockheed hydraulic; two-leading shoe front.

Wheelbase, 8ft 6in (259 cm); widest track, 4ft 3in (130 cm). Overall length, 14ft 5in (439 cm); width, 5ft 1in (155 cm); height, 5ft (152 cm); ground clearance, 7½in (19 cm). Turning circle, 37½ft (1,143 cm). Weight (approx.), 2,492 lb (1,130 kg).

Tank capacity, 9½ Imperial gallons (43 litres). Tyre size, 5.50—15in. Battery, 12-volt, 51 a/h.
Saloon £595

Six-Ninety: 6-cyl, 79.38 × 88.9 mm (3.13 ×

3.49in), 2,639 c.c. (160.9 cu in); O.H.V.; compression ratio, 7.3 to 1; 92 b.h.p. at 4,250 r.p.m.; 4 speeds, synchromesh (overall ratios, 4.1, 5.88, 8.45 and 13.59 to 1); steering column control.

Suspension, independent front, wishbones and torsion bar; coil springs with radius arms and Panhard rod rear. Brakes, Lockheed hydraulic; two-leading shoe front, leading and trailing rear.

Wheelbase, 9ft 5½in (288 cm); widest track, 4ft 6½in (138 cm). Overall length, 15ft 8in (478 cm); width, 5ft 7in (170 cm); height 5ft 2in (158 cm); ground clearance, 7in (18 cm). Turning circle, 37ft 6½in (1,142 cm). Weight (approx.), 3,380 lb (1,533 kg).

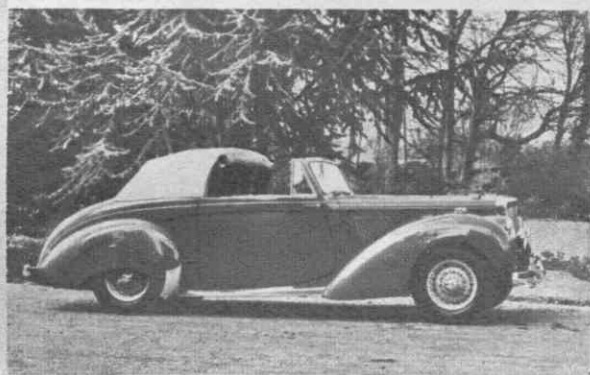
Tank capacity, 13 Imperial gallons (59 litres). Tyre size, 6.00—15in. Battery, 12-volt, 51 a/h.
Saloon £750

THE AUTOCAR,



Vauxhall Cresta

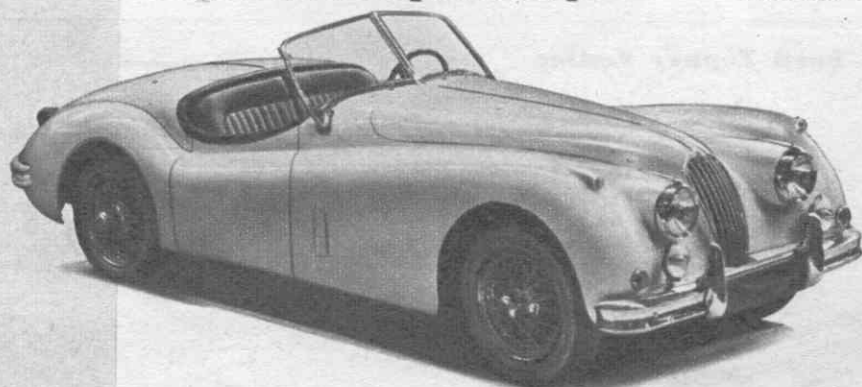
Swallow Doretti



Alvis 3-litre drophead coupé

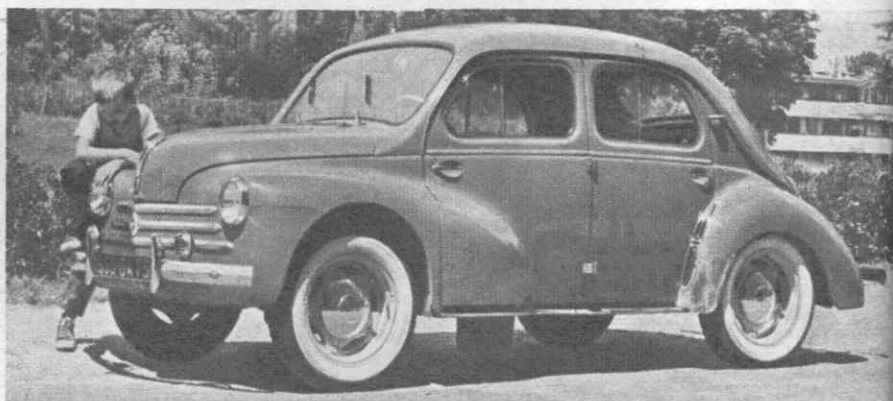


H.R.G. 1½-litre sports 2-seater



Jaguar XK 140

MADE IN



Renault 750 saloon



M.G. Magnette