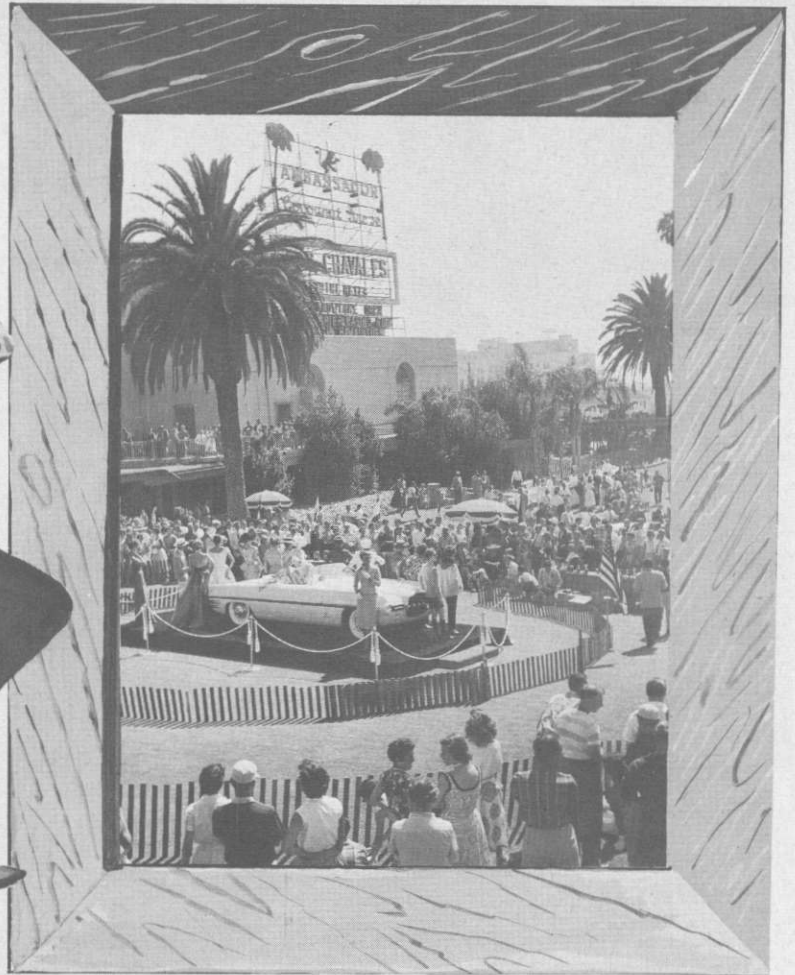
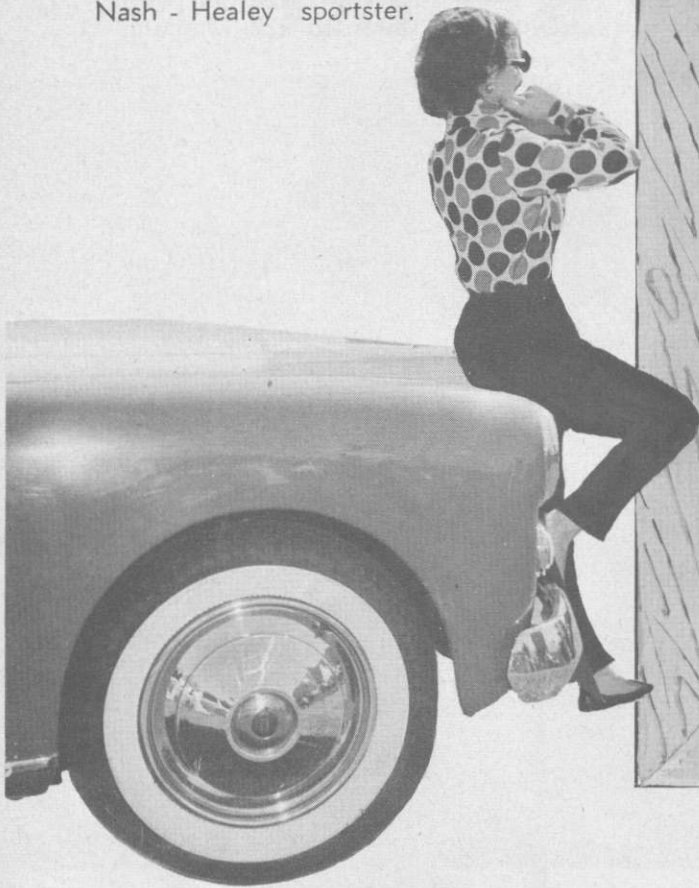


Orange and pink 'skinny pants' with a matching polka-dot, Indian silk blouse was the costume created for driving in the Nash - Healey sportster.



The Firearrow is again the center of all eyes as models parade for the Concourse d'Elegance.

Glamour... in Cars and Fashions



Wearing a smart afternoon dress, television actress Carol Brewster enhances the appearance of a British Doretti. The festivities were concluded after a thrill-filled week with a giant victory banquet.