

LONDON MOTOR SHOW

A BIGGER WOLSELEY

A new engine and many mechanical changes are featured with a new body in the 2.6 litre Wolseley 6/90. Overhead camshafts have been dispensed with and more conventional push-rods now operate the valves. The six-cylinder engine produced 92 b.h.p. at 4280 r.p.m. Like the Four Forty-Four, the Six-Ninety has clean, modern lines, the distinctive Wolseley radiator being neatly blended into the contour of the body. Unlike the smaller car, however, this Six-Ninety has a separate chassis. As a matter of fact, this car's chassis and suspension layout is very similar to that on the new Riley Pathfinder. The rear suspension of the Six-Ninety is interesting in that it uses coil springs and links in place of the usual half-elliptic leaf springs. Transverse location is provided by a Panhard rod. It is interesting to note that more than forty of these cars have been ordered in Australia already. First deliveries are not expected until about May next.

★ ★ ★

NEW SPORTS CARS

A new competition Austin-Healey was announced at the Show. It was known as the 100S. Front end design is slightly altered, as is the placement of the

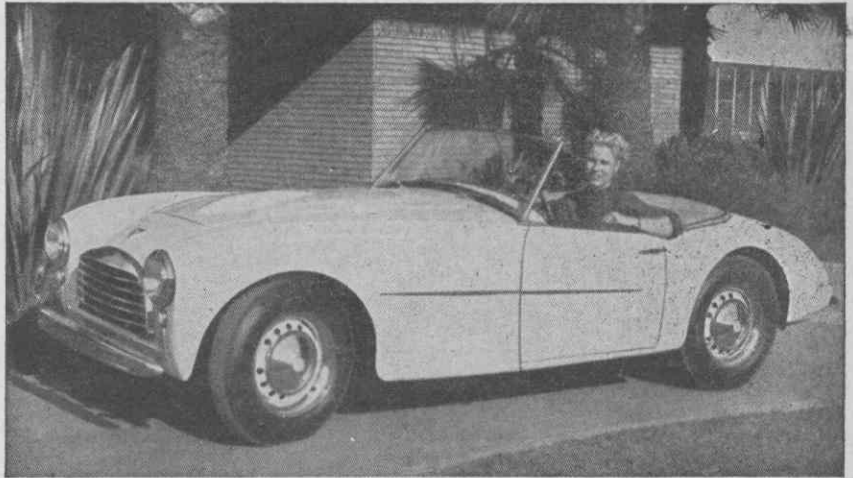
KEEP PRICES DOWN!

Don't let your local Member of Parliament vote for re-taxing road transport.

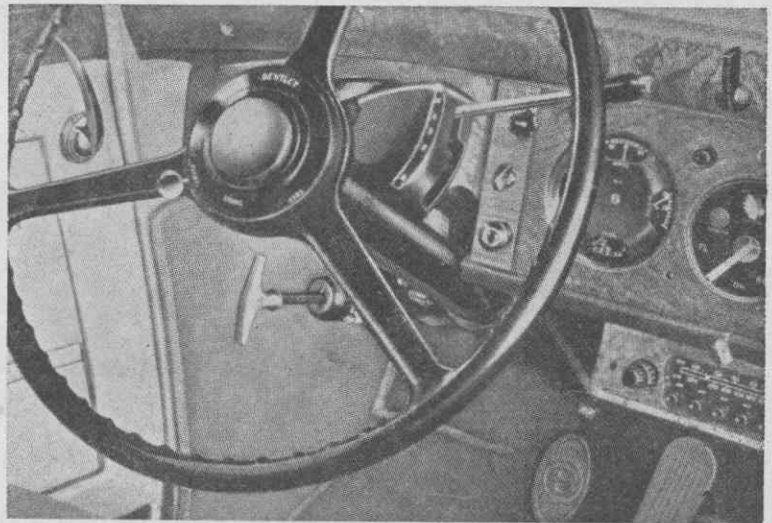
petrol filler cap. Through modification, 132 b.h.p. is available from the engine. A new cylinder head allowing for an 8.3 to 1 compression ratio is used. The cylinders

have separate ports.

The American Hudson Company have produced a sports car. Full details and photographs will be published in the next issue.



A luxury version of the Triumph TR2, the Swallow-Doretti is a first-class example of high quality British coachwork as applied to the sports car. Several Dorettis were recently landed in Melbourne by the Standard Motor Co. Price as yet is not fixed.



Extremely functional, with great beauty in its simplicity, the interior of the Bentley shows that great thought was expended on its design. Shown on the steering column is the selector lever for the automatic gears.

★
PETROL
INJECTION

FROM KENNETH WRIGHT CARS
MELBOURNE
GOLIATH

★
FRONT
WHEEL DRIVE

"A Glutton for Punishment"—THE GOLIATH